



# **Sika® Hygienic Coatings**

## **Solutions for Walls and Ceilings**

### **in Hygiene Sensitive Areas**

### **Selection Guide**



**Innovation & Consistency** | since 1910

# Sika® Hygienic Coatings

## Solutions for Walls and Ceilings in Hygiene Sensitive Areas

Internal walls and ceilings in food and beverage production plants must frequently withstand extreme conditions, including high humidity and wet conditions due to the amount of water used for cleaning and flushing, plus thermal shocks, caused by the sudden changes in temperature. Hospitals, Healthcare facilities and the Pharmaceutical industry are also hygiene sensitive environments that place high demands on coatings, which must also be resistant to stringent cleaning regimes including steam cleaning and chemical detergents and disinfectants. Basic building materials surfaces are not easily maintained in a hygienic condition, as they are difficult to clean and susceptible to bacterial proliferation between cracks and irregularities in them.

### Sikagard® Hygienic Coatings

These are quick and easy to apply by brush, roller or airless spray to most common substrates, including concrete, blockwork, and renders, plus over ceramic tiles and painted surfaces even in cold storage and freezer rooms. The coatings contain an integral preservative that provides long lasting protection. They are water-based and therefore completely safe to use in food and beverage handling environments, as there is no fear of contamination from hazardous solvents or strong odour. The membrane film formed by Sikagard Hygienic Coatings is elastomeric, resistant to moisture and able to absorb thermal and structural movement without cracking or flaking.

### Key Advantages

- Environmentally friendly
- Hard-wearing and impact resistant
- Chemically resistant & UV stable
- Suitable for use in areas of high humidity
- Able to withstand extreme temperatures (from -50° C to +80° C)
- Guaranteed for up to 10 years
- Elastomeric
- Vapour permeable
- Rapid drying and easy to apply
- Available in a wide spectrum of colours

### Typical Areas of Use

- Food and Beverage Manufacturing
- Hospitals, Healthcare & Leisure
- Pharmaceutical and Cosmetics Industries
- Agricultural and Animal Facilities
- Chemical and Electronics Industries
- Nuclear & Other Energy Industries
- Prisons and Military Facilities



For walls and ceilings, with low mechanical stress, cost effective for application on concrete, renders, gypsum and wooden surfaces



### Typical system build-ups:

Primer:

1x **Sika® Bonding Primer**

Top coat:

2x **Sikagard®-203 W**

or

2x **Sikagard®-205 W**

or

2x **Sikagard®-206 W**

or

2x **Sikagard®-207 W**

For walls and ceilings with limited mechanical stress, for cost effective application on concrete, renders, gypsum and wooden surfaces



### Typical system build-ups:

Primer:

1x **Sika® Bonding Primer**

Intermediate coat:

1x **Sikagard®-203 W**

Top coat:

2x **Sikagard®-205 W**

or

2x **Sikagard®-206 W**

or

2x **Sikagard®-207 W**

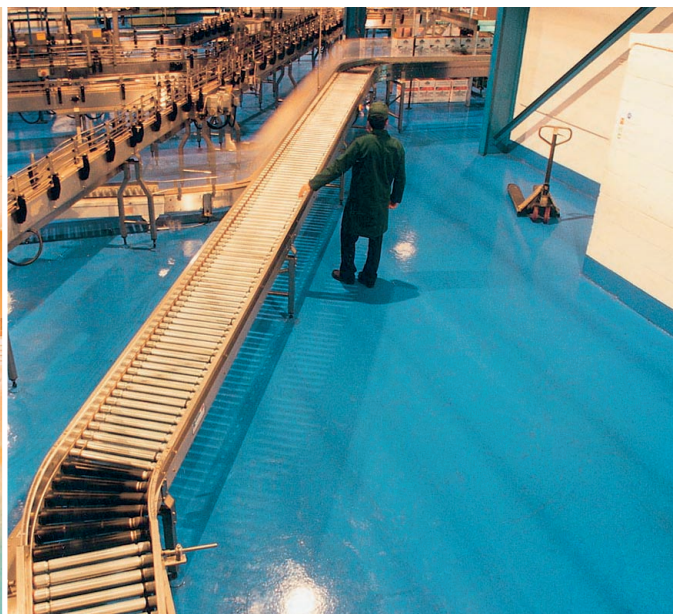
or

2x **Sikagard®-307 W**

Note: Application on steel or other metal surfaces requires **Sika® Metal Primer**, instead of the **Sika® Bonding Primer**







For walls and ceilings with medium mechanical stress, limited crack bridging ability, for cost effective application on concrete, renders, gypsum and wooden surfaces



#### Typical system build-ups:

Primer:

1x **Sika® Bonding Primer**

Intermediate coat:

1x **Sikagard®-203 W**

1x **Reemat lite**

1x **Sikagard®-203 W**

Top coat:

2x **Sikagard®-205 W**

or

2x **Sikagard®-206 W**

or

2x **Sikagard®-307 W**

For walls and ceilings with high mechanical stress, crack bridging ability, for application on concrete, renders, gypsum and wooden surfaces



#### Typical system build-ups:

Primer:

1x **Sika® Bonding Primer**

Intermediate coat:

1x **Sikagard®-203 W**

1 x **Reemat Premium**

1 x **Reemat light**

1x **Sikagard®-203 W**

Top coat:

2x **Sikagard®-205 W**

or

2x **Sikagard®-206 W**

or

2x **Sikagard®-307 W**

## Project Related Requirements for Walls and Ceilings in Sensitive Areas



Walls and ceilings have to fulfil the highest hygiene and increasingly very specific requirements for the prevention of contamination, particularly in the nuclear, pharmaceutical, cosmetic, food, beverage, chemical and electronics industries.



Coatings in the food and beverage industry have to be suitable for direct contact, or to be in close proximity to food stuffs, without adversely affecting them, in addition to being able to withstand intensive cleaning regimes and frequent exposure to chemical detergents.



An important requirement for wall coatings in Cleanrooms is to prevent the potentially damaging effects from VOC/AMC's (Volatile Organic Compounds/Airborne Molecular Contaminants) being released into the atmosphere and affecting the quality of the sensitive materials in these areas. **Sikagard®** Hygienic coatings are "state of the art" in this field and have been proven to give the lowest possible results.



Crack-bridging properties are often required for wall systems to adequately protect the substrate and the environment; otherwise sufficient movement joints must be incorporated into the structure. Therefore all Sika systems are fully tested for their crack-bridging performance.



Easy wall cleaning and ease of maintenance procedures provide the basis for an efficient production environment.

# Sika® Hygienic Coatings

## Solutions for Walls and Ceilings

### in Hygiene Sensitive Areas

The Sikagard® Hygienic Coating Products	Packaging
<b>Sikagard®-203 W</b> Single component, waterborne, modified acrylic resin surface coating	5 l / 15 l units
<b>Sikagard®-205 W</b> Single component, waterborne, modified acrylic resin surface coating with a mid-sheen finish	5 l / 15 l units
<b>Sikagard®-206 W</b> Single component, waterborne, modified acrylic resin surface coating with a matt finish	5 l / 15 l units
<b>Sikagard®-207 W</b> Single component, waterborne, modified acrylic resin surface coating with a mid-sheen finish	5 l / 15 l units
<b>Sikagard®-215 W</b> Single component, waterborne, modified acrylic resin surface coating with a mid-sheen finish	5 l / 15 l units
<b>Sikagard®-216 W</b> Single component, waterborne, modified acrylic resin surface coating with a matt finish	5 l / 15 l units
<b>Sikagard®-218 W</b> Single component, waterborne, modified acrylic resin, intermediate and embedment coating	5 l / 15 l units
<b>Sikagard®-307 W</b> Single component, waterborne, modified polyurethane coating with a gloss finish	5 l / 15 l units
<b>Sikagard®-317 W</b> Single component, waterborne, modified polyurethane coating with a gloss finish	5 l / 15 l units

#### Also Available from Sika



**Sika Services AG**  
Business Unit Contractors  
Speckstrasse 22  
CH-8330 Pfäffikon  
Switzerland  
Phone +41 58 436 23 80  
Fax +41 58 436 23 77  
www.sika.com

Our most current General Sales  
Conditions shall apply.  
Please consult the Product Data Sheet  
prior to any use and processing.

